

Informatica PowerCenter Metadata Manager

Increasing Insight Into Complex Data Relationships

Furio Lanzoni

Global BI-Informatica Shared Services
Hewlett Packard

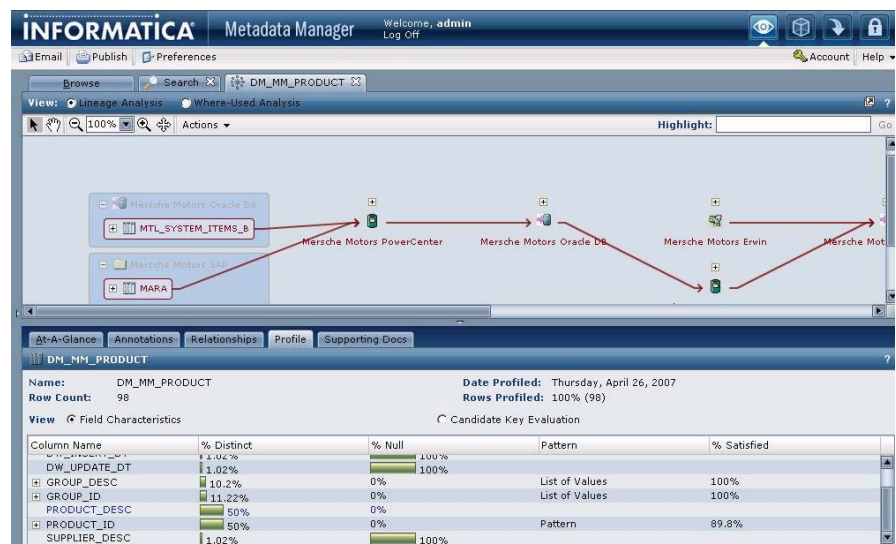
“In the 8.5 release of PowerCenter, Metadata Manager has made major advances in usability. Its personalization and collaboration capabilities make it a lot easier for our teams to get their work done. Also, the redesigned interface makes key tasks such as visualizing data lineage much more personalized, interactive and intuitive, allowing developers to quickly understand data relationships and conduct impact analysis. This really increases our productivity, as well as ensures consistency and visibility across the enterprise.”

BENEFITS

- Raise organizations' confidence in their data
- Minimize compliance exposure
- Shorten project delivery time and obtain more accurate cost estimates
- Increase business agility through better alignment between business analysts and IT

Metadata Manager is an integral part of Informatica® PowerCenter® Advanced Edition (AE). This tool aggregates and links metadata from a wide variety of data sources—including databases, applications, and mainframe systems—in an integration metadata catalog that provides a common taxonomy for business analyst and IT collaboration. By providing more business context to IT artifacts, Metadata Manager strengthens alignment between IT organizations, development teams, and business analysts, which improves business agility.

Metadata Manager delivers personalized data lineage and comprehensive impact analysis, which gives organizations additional insight into their data and increases trust in the data that drives business decisions. By providing full visibility into the potential impact of data changes, Metadata Manager also reduces delivery time and helps teams obtain more accurate cost estimates.



Metadata Manager delivers personalized views of lineage documenting changes to data as it flows through enterprise systems.

METADATA MANAGER INCREASES INSIGHTS INTO COMPLEX DATA RELATIONSHIPS

Data Integration Developers

Data integration developers perform detailed impact analysis when changes are made to metadata used in mappings, sessions, workflows, sources, and targets. Metadata Manager's comprehensive impact analysis capabilities enable them to quickly identify which design artifacts are affected and need to be modified accordingly.

Data Stewards and Business Analysts

Data stewards and business analysts use personalized data lineage to view the data flow diagram at a higher level of abstraction, seeing only the metadata artifacts they are interested in. They can also view integrated data profiling results to quickly assess the content and quality of the data sources.

Data Architects

Data architects interact with the integration metadata catalog to browse and search for metadata definitions, define new custom models, extend existing metadata, and maintain common interface definitions for data sources, warehouses, business intelligence, and other applications that are utilized in enterprise data integration projects.

Increasing Confidence in Data and Improving Responsiveness to the Business

Metadata Manager addresses the enterprise-grade demands on data integration deployments in shared environments, such as Integration Competency Centers. In these shared environments, cross-functional teams collaborate on broader data integration initiatives.

Across the enterprise, Metadata Manager gives multiple departments visibility into shared, reliable, common definitions of metadata. These definitions are used in data integration projects and maintained within a robust integration catalog. Metadata Manager also provides insights into the quality of data being consumed, and transparency into where the data comes from and how it is used, expediting responses to business requests.

Metadata Manager Key Features

Integration Metadata Catalog

- Collect and link metadata from a wide variety of sources, including relational databases, modeling tools, integration processes, SAP, and business intelligence tools
- Define and maintain a common taxonomy of metadata definitions, along with business information, by linking custom metadata and metadata extensions to technical metadata
- Augment IT artifacts with rich business context by annotating metadata with business descriptions and business rules, linking

supporting documents, such as specifications and business requirements, and sharing favorites and saved search conditions

- Find relevant items within the catalog in one click, using simple keyword-based search
- Narrow search results with advanced search, which allows any combination of complex conditions involving detailed attributes and returns results based on relevance to the user

Personalized Data Lineage

- Visualize data flows and dependencies across all systems and processes to understand where data came from, where it's going, and how it's transformed
- Interactively trace, navigate, search, highlight, and drill down from a system to a field level within a data lineage diagram
- Dynamically launch and view multiple lineage diagrams at the same time to facilitate complex analysis that involves tracing the ultimate sources of multiple tables in an enterprise data warehouse or multiple components of a business intelligence report
- Personalize metadata exploration by defining preferences and favorites so that functions such as search, browse, lineage, and impact analysis only yield relevant information, reducing clutter in a large catalog

Comprehensive Impact Analysis

- Analyze detailed dependencies between data assets and determine where they are used throughout an overall data integration solution
- Isolate the impact of changes to data sources, mappings, transformations, application tables, and report fields used in a data integration solution

Integrated Data Profiling Results and Rich Metadata Analysis

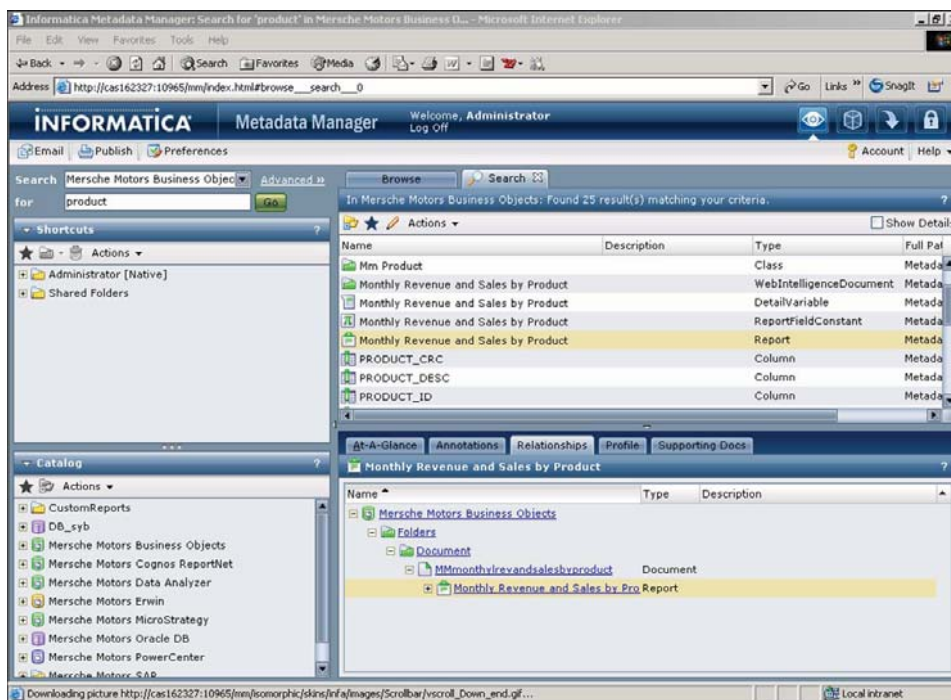
- Gain additional insight into the underlying data and quickly assess data quality at different points in the data lineage with integrated data profiling results
- Quickly locate data and integration process assets with comprehensive metadata inventory reports, which reveal all the data integration metadata in the enterprise, their definitions, and where and how they are used, to aid data discovery and audit reporting for regulatory compliance and data governance

Simple Deployment

- Simplify deployment and provide access from any location with an integrated Web-based user interface for all Metadata Manager functionality, including metadata browsing, searching, and loading, data lineage, impact analysis, modeling, and administration
- Centrally configure and monitor metadata services, and manage Metadata Manager users, groups, and roles in PowerCenter's unified administration console
- Minimize the risk of unauthorized access to information assets by assigning globally distributed teams granular privileges and permissions to objects within the catalog

Broad Metadata Connectivity and Easy Extensibility

- Accelerate metadata extraction and linkage using prebuilt connectivity for a wide variety of sources, including flat files, databases, SAP, modeling tools, the PowerCenter platform, and business intelligence tools
- Speed deployment and delivery of the most up-to-date information with PowerCenter's parallelized, high-performance metadata loading capabilities
- Create custom meta-models quickly by defining new classes, hierarchies, and associations using a simple meta-model editor, and extend existing metadata with custom attributes to more flexibly address new enterprise requirements



Easily browse and search metadata within the Integration Metadata Catalog, and view relationships, profiling results, annotations, and linked documents in a common interface.

Metadata Manager Benefits

Deliver Trusted Data

With dynamic, personalized visualization of end-to-end data lineage, Metadata Manager ensures transparency for both IT and business analysts. Metadata Manager provides insight into where data in business intelligence reports comes from, its ultimate data sources, and the intermediate data stores and transformation processes that it flows through.

Integrated data profiling capabilities allow Metadata Manager to provide additional insights into the number, distribution, and duplication of data values, adherence to business rules, and completeness of a particular source field. Metadata Manager enables business analysts and IT to quickly assess the accuracy and consistency of data that drives business decisions, which helps them deliver more trusted data.

Enhance Business Alignment Through Cross-Functional Collaboration

Powered by PowerCenter's high-performance, scalable data integration platform, Metadata Manager can extract metadata from a variety of data sources, including databases, modeling tools, business intelligence and SAP applications, and PowerCenter itself. These metadata are then integrated in a centralized integration metadata catalog, which helps business analysts and IT to easily share and exchange information and collaborate using a common taxonomy of metadata definitions that are enriched with their business context.

By augmenting metadata with annotations and linked documents—such as Microsoft Word or Excel specifications—and by sharing favorites and search conditions, personalized metadata assets, and customized views, IT organizations can streamline information exchange among team members to quickly identify and resolve issues. Metadata Manager promotes reuse and reduces IT costs by helping teams to work together more effectively.

With the ability to view the data flow at different levels of detail—and to personalize the graphical data lineage diagram to only include information that each user is interested in—business analysts can gain global insight into the sources of data, while IT developers can drill down to the specific transformations that are used in data integration processes. Metadata Manager encourages efficient knowledge transfer and alignment between business analysts and IT personnel.

Improve Responsiveness

With a robust integration metadata catalog that provides enterprise-wide visibility into metadata, Metadata Manager reduces the time it takes to resolve business to IT data-related questions, definitions, and their associated business contexts.

Metadata Manager's comprehensive impact analysis capabilities enable IT developers to quickly assess which data assets may be affected by a potential change, resulting in faster data integration project delivery and more accurate cost impact estimates. Metadata Manager enhances IT's agility and responsiveness to changing business demands.

Learn More

Let Informatica help you determine how the PowerCenter Data Masking Option can maximize the business value of your data.

Visit us at www.informatica.com/powercenter or call 1.800.653.3871.

About Informatica

Informatica is a leading provider of enterprise data integration software and services.

With Informatica, organizations can gain greater business value by integrating all their information assets from across the enterprise. Thousands of companies worldwide rely on Informatica to reduce the cost and expedite the time to address data integration needs of any complexity and scale.

INFORMATICA[®]
The Data Integration Company™

Worldwide Headquarters, 100 Cardinal Way, Redwood City, CA 94063, USA
phone: 650.385.5000 fax: 650.385.5500 toll-free in the US: 1.800.653.3871 www.informatica.com

Informatica Offices Around The Globe: Australia · Belgium · Canada · China · France · Germany · Ireland · Japan · Korea · the Netherlands · Singapore · Switzerland · United Kingdom · USA

© 2007 Informatica Corporation. All rights reserved. Printed in the U.S.A. Informatica, the Informatica logo, and PowerCenter are trademarks or registered trademarks of Informatica Corporation in the United States and in jurisdictions throughout the world. All other company and product names may be trade names or trademarks of their respective owners.

6792 (11/06/2007)